

ENGLISH

Kr
M



Entrance of Kröller-Müller Museum with work by Oswald Wenckebach and Mark Di Suvero



MUSEUM & SCULPTURE GARDEN

Helene's lifework

The Kröller-Müller Museum is the lifework of Helene Kröller-Müller. Between 1907 and 1922, she and her husband Anton Kröller bought almost 11,500 works of art: one of the largest private collections of the twentieth century. It was Helene's dream to have her own 'museum house', a place where she could share her passion for modern art with other art lovers. Helene's dream was fulfilled in 1938, when the Kröller-Müller Museum opened its doors to the public. Under her successors, the museum was extended several times with new buildings and an expansive sculpture garden. The collection grew into one of the leading collections in the field of modern art.



Vincent van Gogh, *Bridge at Arles (Pont de Langlois)*, March 1888

From Vincent to the present day

The Kröller-Müller Museum is a second home to Vincent van Gogh. The museum boasts almost 90 paintings and more than 180 drawings, making it the second largest collection of Van Goghs in the world. In addition, the museum is home to top works by modern masters including Claude Monet, Georges Seurat, Pablo Picasso and Piet Mondriaan. Temporary exhibitions ensure that the museum keeps pace with all the latest developments and retains public interest. New acquisitions ensure a dynamic collection that follows close on the heels of contemporary art history. The entire spectrum; from Vincent to the present day.



Giacomo Balla, *Forms of motorcycle noise*, 1913



Rietveld Pavilion with work by Barbara Hepworth

Unique experience

A visit to the museum is an experience in itself. A voyage of discovery that starts at the entrance to the Hoge Veluwe Park. An unbroken stretch of 5,500 hectares of forests, heaths, grasslands and sand drifts. It is the natural habitat for deer, mouflon and wild boar. Visitors can roam around freely by foot or with a free white bicycle, to automatically arrive at the finest treasure trove to be found in the Netherlands. The art collection and magnificent sculpture garden are unique in the world. And there's more: audio guides, workshops and lectures, concerts and children's theatre. The Kröller-Müller Museum has everything it takes to give its visitors a unique and unforgettable experience.

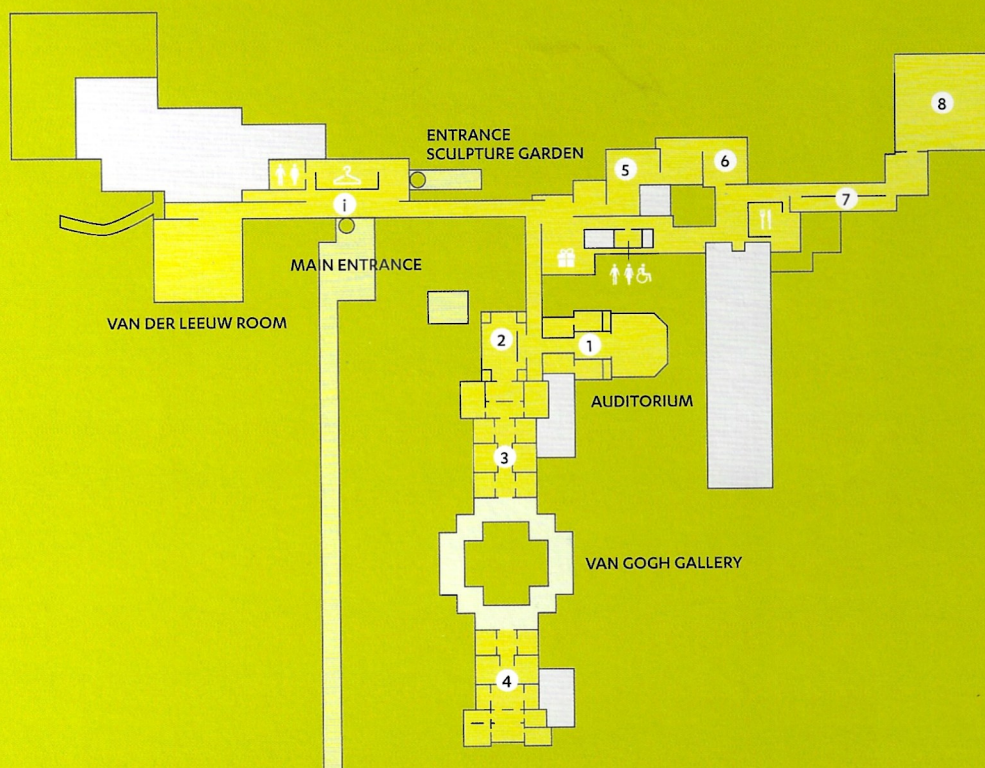
25-hectare outdoor gallery

The museum is set in one of Europe's largest sculpture gardens. An outdoor gallery covering 25 hectares, in which modern sculptures blend into the natural background. The garden serves as a backdrop for more than 160 sculptures by prominent artists, from Aristide Maillol to Jean Dubuffet, and from Marta Pan to Pierre Huyghe. It would be hard not to enjoy the setting, not to be drawn in by the sculptures and the natural beauty. Stretch out on the grass, enjoy a picnic or simply run around; there are countless ways to enjoy the sculpture garden.



Sculpture garden with Floating sculpture, Otterlo (1960-1961) by Marta Pan in the foreground

Map Museum



EXPO 1 5 6 7 8
Temporary exhibitions

EXPO 2 3 4
Collection presentation

VAN GOGH GALLERY
Van Gogh collection presentation

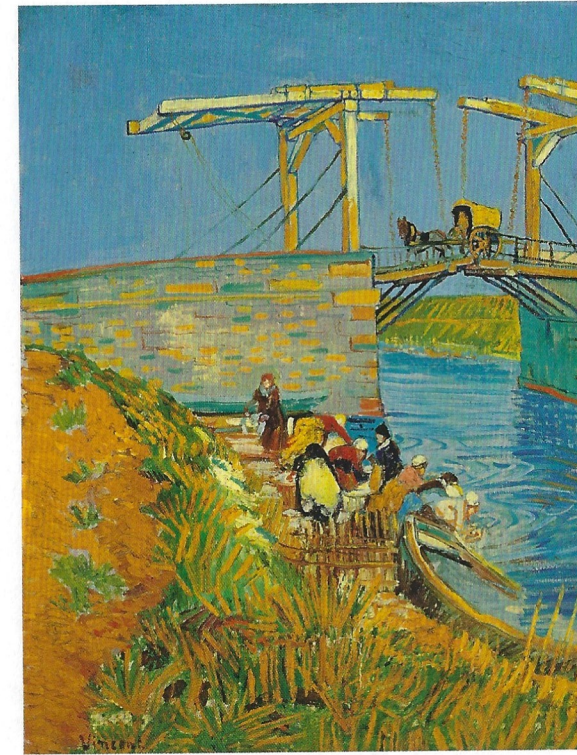
0 8 16 m
Scale: 1 cm is ± 8 m

A paradise for art lovers

The Kröller-Müller Museum is a place where things of beauty come together. The unique combination of art, nature and architecture guarantees visitors a truly unforgettable experience. An experience that arouses all the senses. The museum is a paradise for both seasoned art lovers and objective newcomers. Nowhere else in the world is the enjoyment of art so intense, due to the phenomenal collection and the beautiful location in the heart of nature. With almost 400,000 visitors a year, the Kröller-Müller Museum is one of the most popular museums in the Netherlands. The collections are also a huge international success. Masterpieces on loan attract millions of visitors throughout the world.



Sculpture gallery with *Horse and rider*, 1951 – 1955, from Marino Marini in the foreground



Vincent van Gogh, *Bridge at Arles (Pont de Langlois)*, M

From Vincent the present c

The Kröller-Müller Museum is a second ho
Vincent van Gogh. The museum boasts al
90 paintings and more than 180 drawings,
making it the second largest collection of
Goghs in the world. In addition, the museu
is home to top works by modern masters
including Claude Monet, Georges Seurat,
Pablo Picasso and Piet Mondriaan. Tempor
exhibitions ensure that the museum keep
with all the latest developments and retain
public interest. New acquisitions ensure a
dynamic collection that follows close on th
heels of contemporary art history. The en
spectrum; from Vincent to the present da

Getting There



Accessibility and parking

The Kröller-Müller Museum is situated in the heart of the Hoge Veluwe National Park, a one-hour's drive from Amsterdam. There are three entrances to the museum: Otterlo, Hoenderloo and Schaarsbergen* (for coaches).

The museum is accessible via the A1 and A12 highways. Turn off your car and follow the signs for Park Hoge Veluwe Kröller-Müller. By public transport, the museum can be reached with bus 108 from the railway stations of Apeldoorn

and Ede-Wageningen. From Arnhem railway station with bus 105 (direction Barneveld). For both routes, you need to change in Otterlo to bus 106 for the museum. For public transport information, see: www.9292ov.nl. Travel time by taxi from Ede-Wageningen, Arnhem, or Apeldoorn stations is approximately 25 minutes.

White bikes

The free White Bicycles are stationed at the three entrances to the park, at Museonder (the visitors' centre) and at the museum.

Practical Information

Opening hours

The museum is usually open from Tuesday to Sunday from 10.00 hrs to 17.00 hrs. Check the current opening hours on normal opening days, public holidays, and during school holidays at www.krollermuller.nl.

Guided tours and audio tours

The Kröller-Müller Museum's group of tour guides offer tours upon request in several languages. The maximum group size is 15 people per guide. For more information, please see www.krollermuller.nl. The museum has audio tours available in Dutch, English, German, French, Spanish, Italian, Japanese, and Chinese.

Accessibility

The museum is fully accessible to wheelchair users. Upon presentation of a disability card, the visitor accompanying the wheelchair user can park for free and enter the museum for free. Wheelchairs, walkers, and children's buggies can be borrowed from the museum.

Restaurants

The museum has two restaurants. In the middle of the museum is the bright and spacious Monsieur Jacques restaurant, which offers a beautiful view of the garden. Our outdoor restaurant MJ is in the sculpture garden, surrounded by works of art.



Online tickets

You may enter the museum with a pre-purchased e-ticket. Please buy your ticket online at tickets.krollermuller.nl or scan the QR code.

Education

The museum has special educational programmes for primary and secondary school children. www.krollermuller.nl/onderwijs

Support the museum

Become a sponsor of the Helene Kröller-Müller Fonds foundation and support our restorations, large exhibitions, and educational projects. More information can be found on www.krollermuller.nl/steun-het-museum

Tour operators

The museum has a special offer for tour operators. Please e-mail sales@krollermuller.nl for more information or to make an individual or group reservation.

Contact

Please visit www.krollermuller.nl/en for more information, admission prices, and e-tickets.

Houtkampweg 6, 6731 AW Otterlo
The Netherlands
+31 (0)318 59 1241



Cover image: Vincent van Gogh, *Portrait of Joseph Roulin*, February/March 1889

Photographers: Marjon Gemmeke, Rik Klein Gotink, Jannes Linders, Cary Markerink

© 2023, subject to change



VRIENDEN
LOTERIJ

