



The history of Skipton Castle is inseparable from the Clifford family who fought in several wars including the Battle of Bannockburn, Agincourt and Wars of the Roses. Granted the property by Edward II in 1310, Robert Clifford was appointed the first Lord Clifford of Skipton and Guardian of Craven. Robert Clifford began heavily fortifying the Castle, but he was brutally killed at Bannockburn in 1314. During the Civil War, Skipton Castle was the last Royalist bastion in the North, yielding only after a three-year siege in 1645. 'Slighted' under the orders of Cromwell, the Castle was skilfully restored years later by the indubitable matriarch Lady Anne, who fought a tenacious battle with her uncle for rights to her inheritance from her late father, George Clifford. Skipton remained the Clifford's principal seat until her death in 1676.

Today, we continue with Lady Anne Clifford's fine restoration work to preserve this quiet jewel of a Castle. Visitors can walk through history into the magnificent Banqueting Hall, the Old Kitchen, the Bedchamber or climb from the depths of the Dungeon to the top of the Watch Tower. In search of treats and curiosities is the quaint Castle Shop or while the day away on the picnic terrace and Clifford Tearooms for a tasty lunch or afternoon tea. A rare fully roofed Castle with an enchanting early Tudor courtyard, an ancient yew tree planted by Lady Anne herself, chequered lawns, stout burly towers and chambers are all but a hint of its splendour and well worth a visit any season of the year.

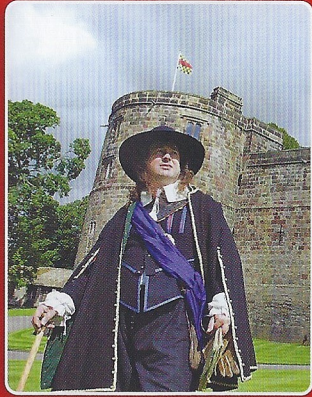


Over 900 years old,
Skipton Castle is one of the
best preserved & most complete
castles in England.



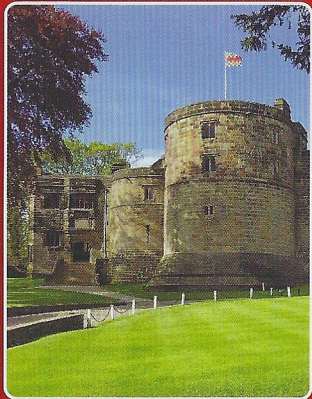
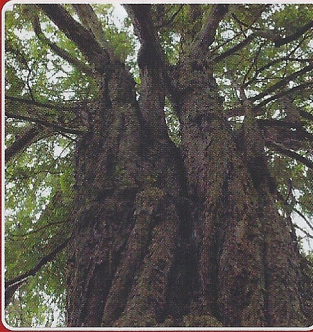


Escape the everyday



Learn from the Past...

It's all about YEW



A Great Day Out



For information on our events, visit:
www.skiptoncastle.co.uk
Enquiries/Venue Hire:
01756 792442

Open Every Day

from 10am Closed 23-25 Dec.

Buy Tickets Castle & Parking



Book online for a guaranteed timeslot & save on admission scan now to book

Clifford Tea Rooms: licensed
Castle Shop: noted book section
Picnic Area: peaceful chapel terrace.

Coach & Car: parking nearby
The Bailey Car Park **BD23 1UA**
Rail & Bus: stations nearby.

Please Note: there is no wheelchair access to the castle.

Adults:	£10.20
Children (5-17):	£6.90
Children under 5:	FREE
Over 65s:	£9.20
Family Ticket:	£34.00
for two adults and up to three under 18s. (saves up to £7.10)	

Adult Groups £9.20 per head for pre-booked parties of fifteen or more.
Free Castle Guides & Coach Parking.

Free Tour Sheets in a choice of ten languages: (English, French, German, Dutch, Italian, Spanish, Chinese, Japanese, Russian or Esperanto)

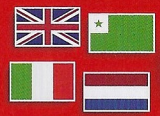
School Parties (all ages) £6.90 per head. One free supervising teacher with every five children.



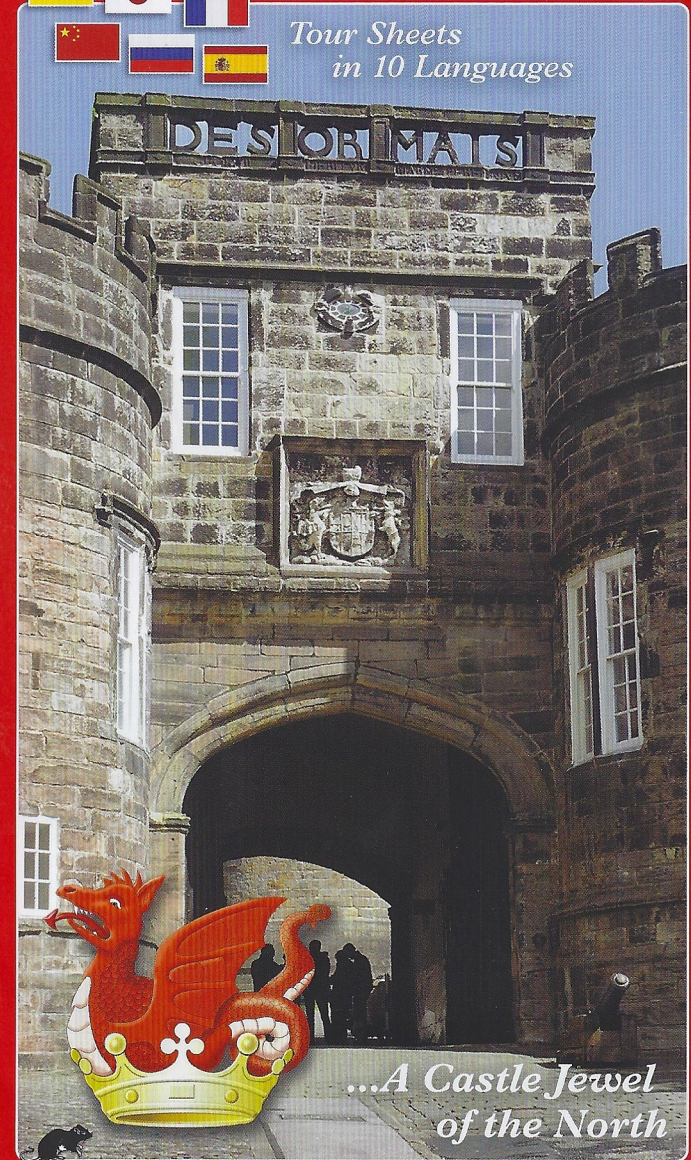
Skipton Castle,
Skipton, North Yorkshire
BD23 1AW

01756 792442
info@skiptoncastle.co.uk
www.skiptoncastle.co.uk

Come & explore Skipton Castle



Tour Sheets in 10 Languages



...A Castle Jewel of the North