

# Making Windows 10 Work For Me



Sue Kayton November 2016



## **What is different**

---

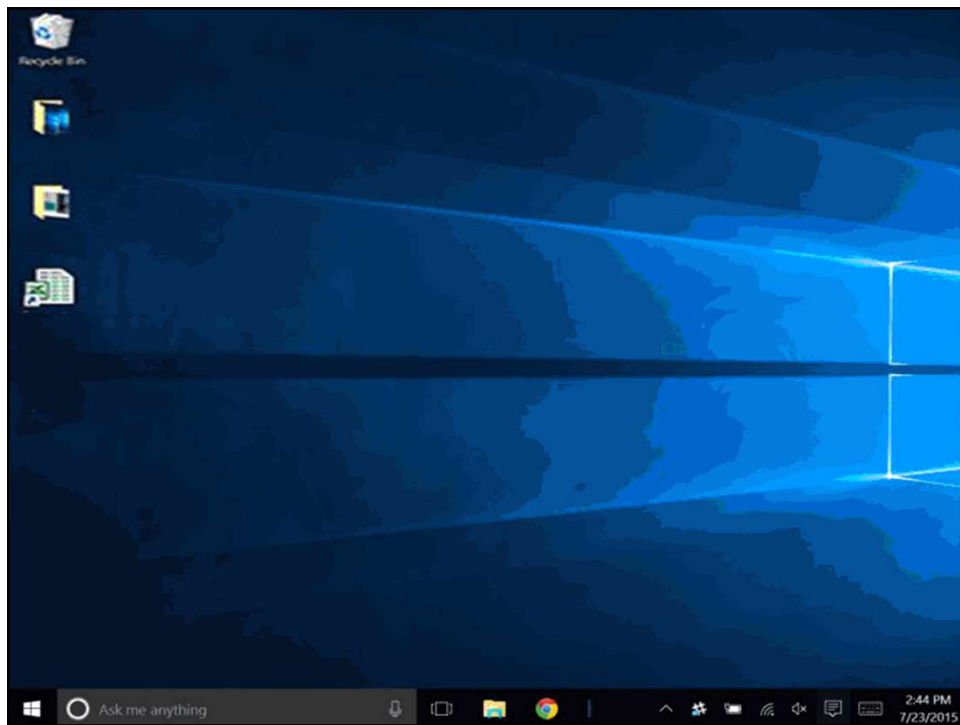
- **Some names**
- **Desktop icons**
- **Start menu**
- **Internet Explorer**
- **Microsoft Edge**
- **Search (Cortana)**
- **Picture viewer**
- **Games**
- **Crash recovery**
- **Safe mode**

## **New names**

---

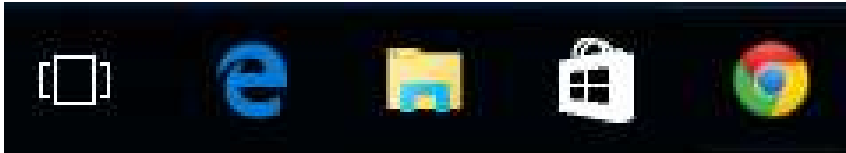
- This PC (was My Computer)
- Microsoft Edge (was Internet Explorer)
- PC settings (Windows 10 control panel)
- Windows update – moved to PC settings

# Desktop



## New icons

---



The image shows a horizontal row of five icons on a black background. From left to right: a white square with two vertical bars (Task view), a blue 'e' (Microsoft Edge), a yellow folder (File Explorer), a white storefront (Store), and a multi-colored wheel (Chrome). Arrows point from text labels below to the Task view, Microsoft Edge, File Explorer, and Store icons.

Task view

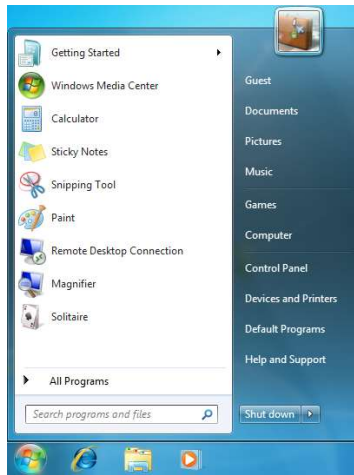
Microsoft Edge  
replaces  
Internet Explorer

File  
Explorer

Store -  
Buy and  
download apps

# Start menu

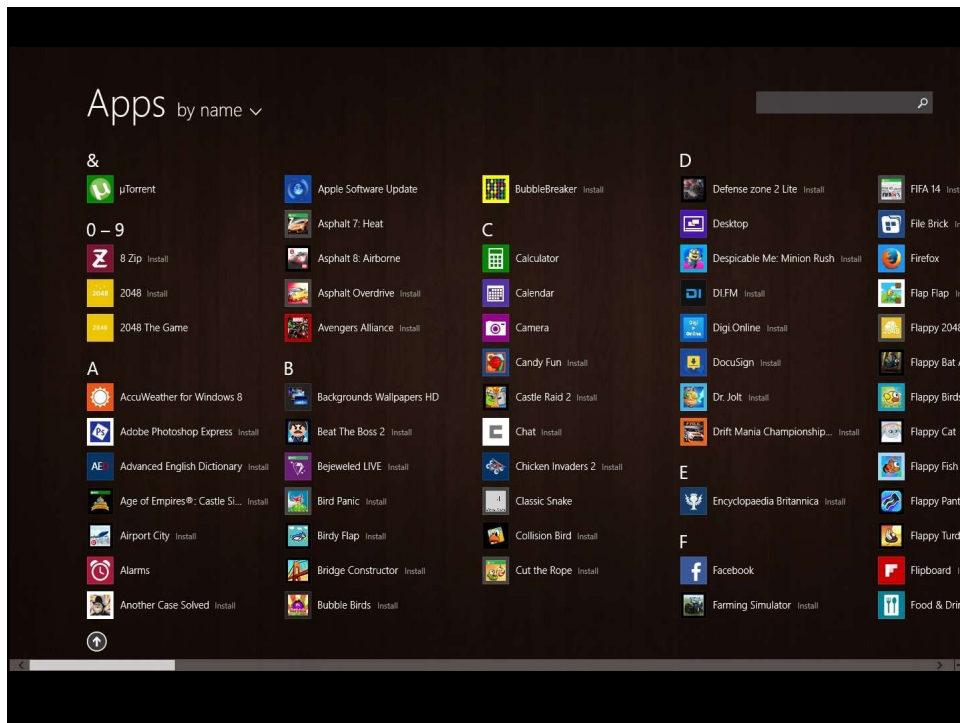
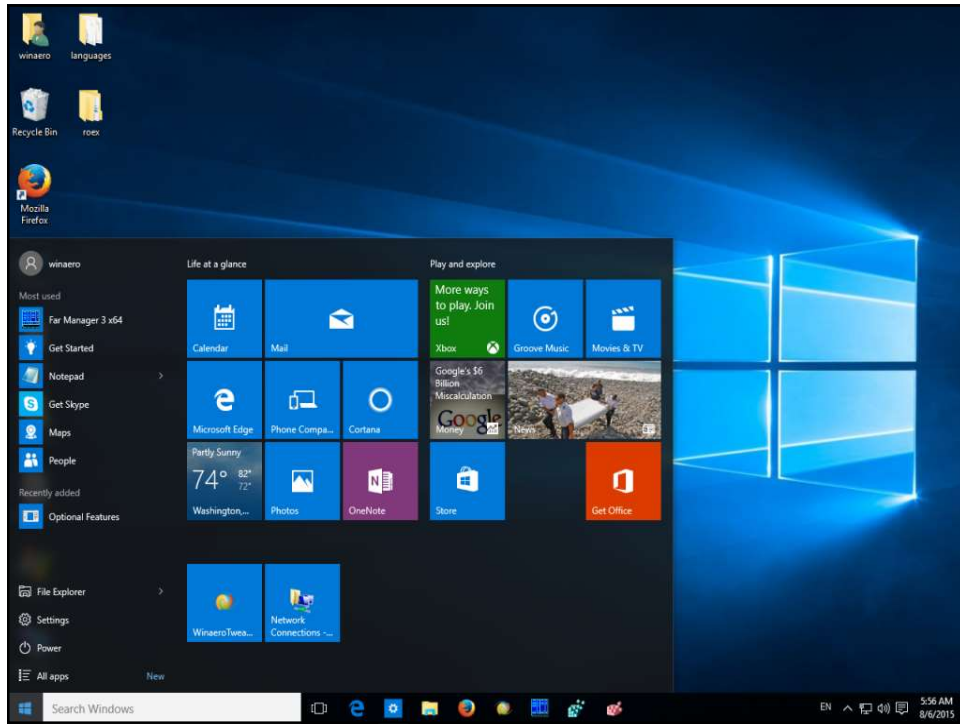
# Where did my start button go?

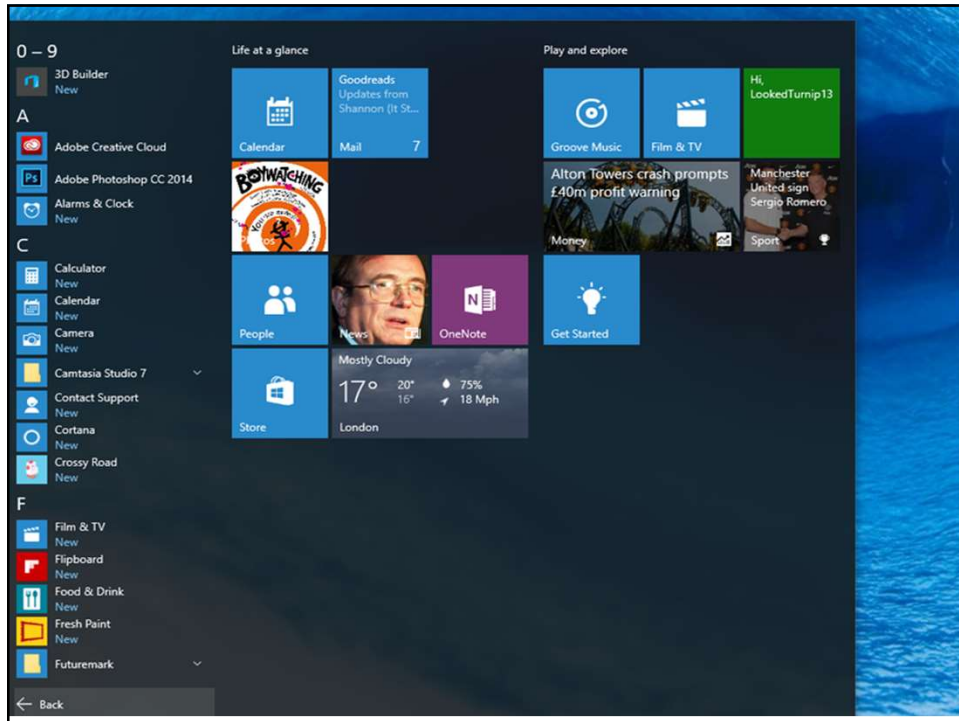


## Ninite.com

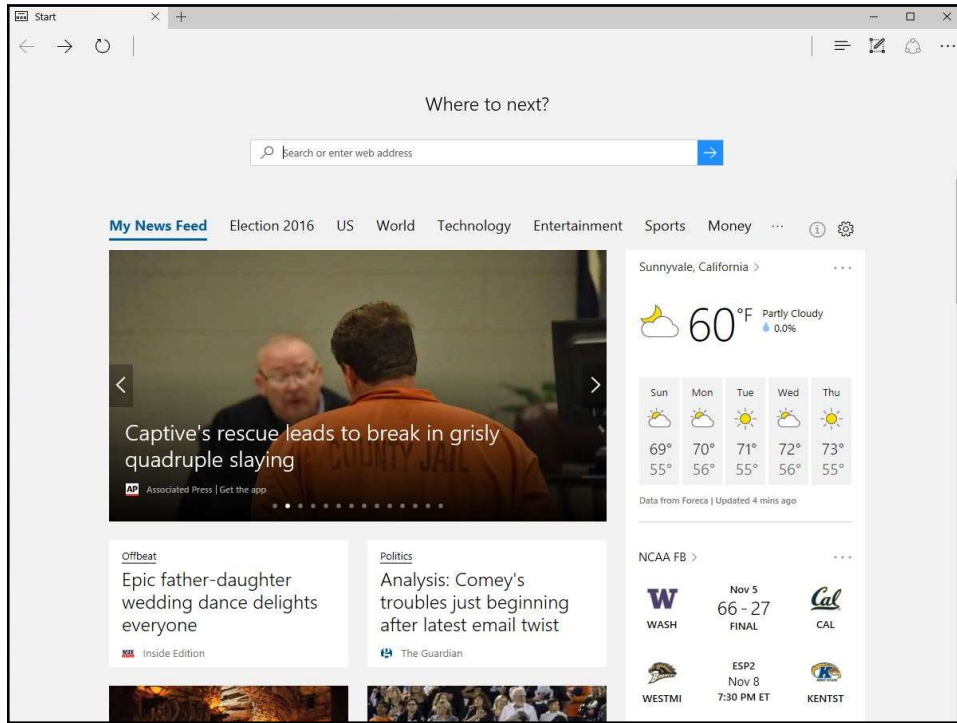
<b>Web Browsers</b> <ul style="list-style-type: none"><li><input type="checkbox"/> Chrome</li><li><input type="checkbox"/> Opera</li><li><input type="checkbox"/> Firefox</li></ul>	<b>Messaging</b> <ul style="list-style-type: none"><li><input type="checkbox"/> Skype</li><li><input type="checkbox"/> Pidgin</li><li><input type="checkbox"/> Thunderbird</li><li><input type="checkbox"/> Trillian</li><li><input type="checkbox"/> AIM</li><li><input type="checkbox"/> Yahoo!</li></ul>	<b>Media</b> <ul style="list-style-type: none"><li><input type="checkbox"/> iTunes</li><li><input type="checkbox"/> VLC</li><li><input type="checkbox"/> KMPlayer</li><li><input type="checkbox"/> AIMP</li><li><input type="checkbox"/> foobar2000</li><li><input type="checkbox"/> Winamp</li><li><input type="checkbox"/> MusicBee</li><li><input type="checkbox"/> Audacity</li><li><input type="checkbox"/> K-Lite Codecs</li><li><input type="checkbox"/> GOM</li><li><input type="checkbox"/> Spotify</li><li><input type="checkbox"/> CCCP</li><li><input type="checkbox"/> MediaMonkey</li></ul>	<b>Runtimes</b> <ul style="list-style-type: none"><li><input type="checkbox"/> Java 8</li><li><input type="checkbox"/> .NET 4.6.1</li><li><input type="checkbox"/> Silverlight</li><li><input type="checkbox"/> Air</li><li><input type="checkbox"/> Shockwave</li></ul>	<b>Imaging</b> <ul style="list-style-type: none"><li><input type="checkbox"/> Paint.NET</li><li><input type="checkbox"/> GIMP</li><li><input type="checkbox"/> IrfanView</li><li><input type="checkbox"/> XnView</li><li><input type="checkbox"/> Inkscape</li><li><input type="checkbox"/> FastStone</li><li><input type="checkbox"/> Greenshot</li><li><input type="checkbox"/> ShareX</li></ul>	<b>Documents</b> <ul style="list-style-type: none"><li><input type="checkbox"/> Foxit Reader</li><li><input type="checkbox"/> LibreOffice</li><li><input type="checkbox"/> SumatraPDF</li><li><input type="checkbox"/> CutePDF</li><li><input type="checkbox"/> PDFCreator</li><li><input type="checkbox"/> OpenOffice</li></ul>
<b>Security</b> <ul style="list-style-type: none"><li><input type="checkbox"/> Essentials</li><li><input type="checkbox"/> Avast</li><li><input type="checkbox"/> AVG</li><li><input type="checkbox"/> Malwarebytes</li><li><input type="checkbox"/> Ad-Aware</li><li><input type="checkbox"/> Spybot 2</li><li><input type="checkbox"/> Avira</li><li><input type="checkbox"/> SUPERAntiSpyware</li></ul>	<b>Online Storage</b> <ul style="list-style-type: none"><li><input type="checkbox"/> Dropbox</li><li><input type="checkbox"/> Google Drive</li><li><input type="checkbox"/> Mozy</li><li><input type="checkbox"/> OneDrive</li><li><input type="checkbox"/> SugarSync</li><li><input type="checkbox"/> BitTorrent Sync</li></ul>	<b>Developer Tools</b> <ul style="list-style-type: none"><li><input type="checkbox"/> Python</li><li><input type="checkbox"/> FileZilla</li><li><input type="checkbox"/> Notepad++</li><li><input type="checkbox"/> JDK 8</li><li><input type="checkbox"/> JDK x64 8</li><li><input type="checkbox"/> WinSCP</li><li><input type="checkbox"/> PuTTY</li><li><input type="checkbox"/> WinMerge</li><li><input type="checkbox"/> Eclipse</li></ul>	<b>File Sharing</b> <ul style="list-style-type: none"><li><input type="checkbox"/> qBittorrent</li><li><input type="checkbox"/> eMule</li></ul>	<b>Utilities</b> <ul style="list-style-type: none"><li><input type="checkbox"/> TeamViewer 11</li><li><input type="checkbox"/> ImgBurn</li><li><input type="checkbox"/> Auslogics</li><li><input type="checkbox"/> RealVNC</li><li><input type="checkbox"/> TeraCopy</li><li><input type="checkbox"/> CDBurnerXP</li><li><input type="checkbox"/> Revo</li><li><input type="checkbox"/> Launchy</li><li><input type="checkbox"/> WinDirStat</li><li><input type="checkbox"/> Glary</li><li><input type="checkbox"/> InfraRecorder</li><li><input type="checkbox"/> Classic Start</li></ul>	<b>Other</b> <ul style="list-style-type: none"><li><input type="checkbox"/> Evernote</li><li><input type="checkbox"/> Google Earth</li><li><input type="checkbox"/> Steam</li><li><input type="checkbox"/> KeePass 2</li><li><input type="checkbox"/> Everything</li><li><input type="checkbox"/> NV Access</li></ul>





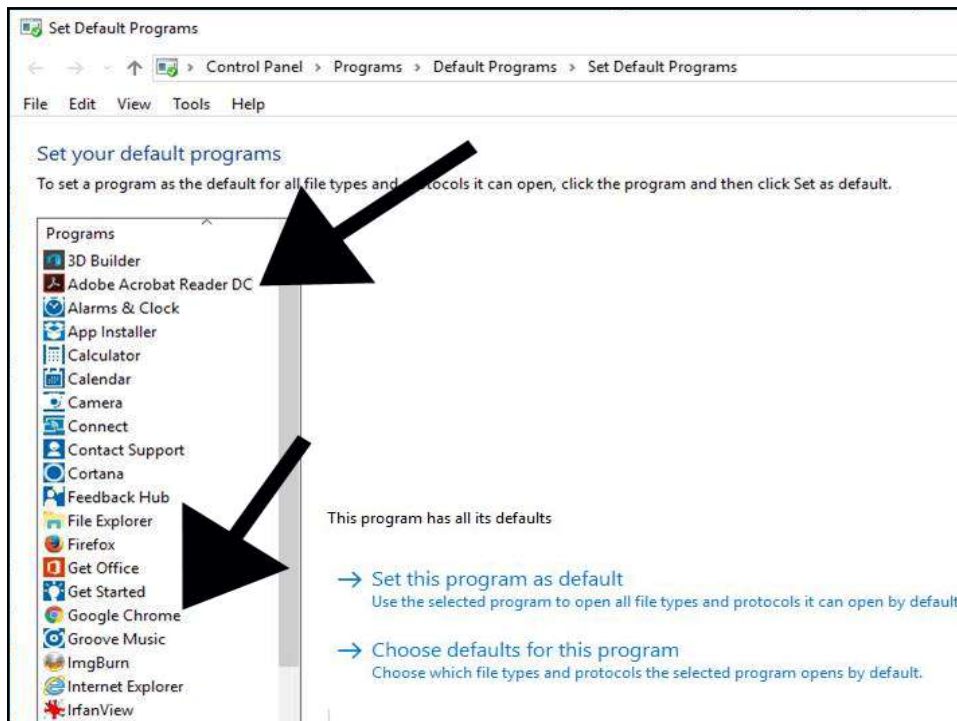
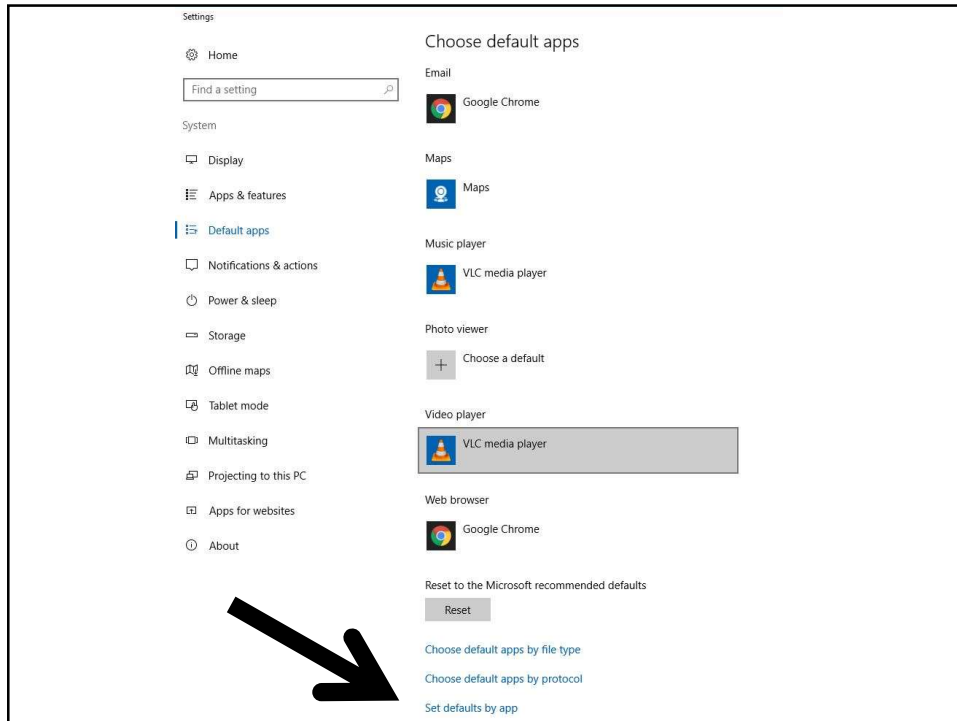


# Microsoft Edge



# Default programs

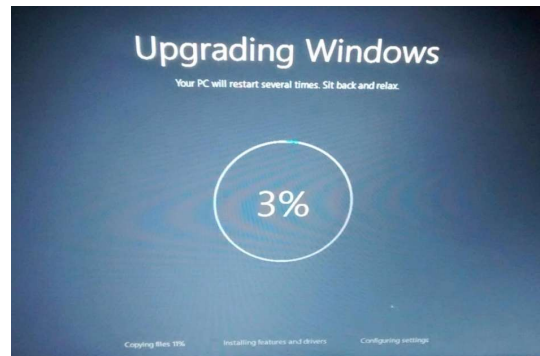




## Windows 10 major upgrade

---

- Major upgrades twice a year
- Computer becomes unusable for two hours
- No notification or warning
- Start menu changes
- Games disappear

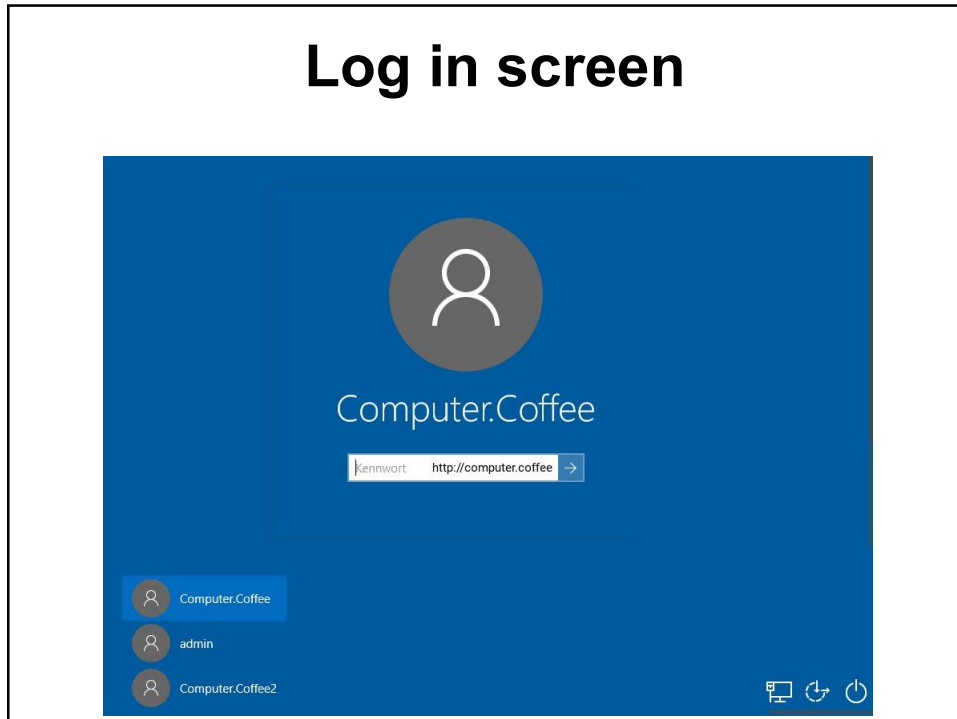


## Remove clutter

---

- Remove un-needed items from:
  - Desktop
  - Taskbar
  - Start menu
- Turn off OneDrive
- Turn off notifications

## Log in screen



## Local or Microsoft login

---

- Local login
  - Easier to trouble-shoot and repair
  - Can use blank password
  - Can automatically log in
- Microsoft login
  - Sync to OneDrive, LiveMail and Outlook.com
  - Can get locked out of computer
  - MUCH harder to trouble-shoot
  - Cannot use blank password

## Windows games

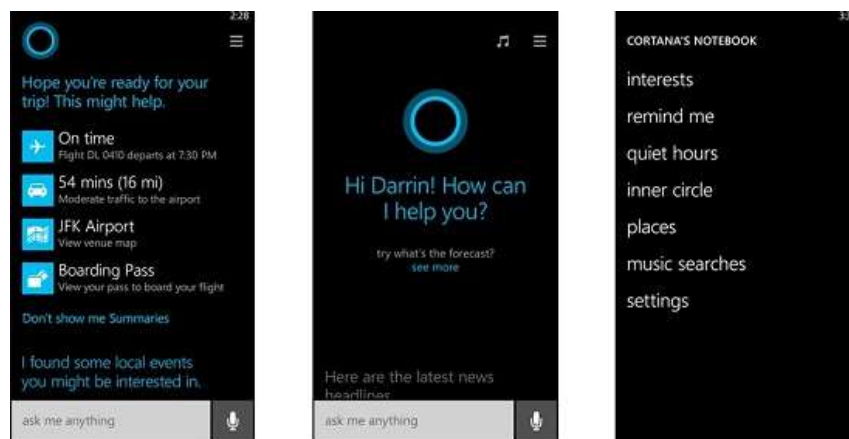
---

- FreeCell, Solitaire, Minesweeper still available
- Have to re-install after every service pack (build) upgrade, about twice a year

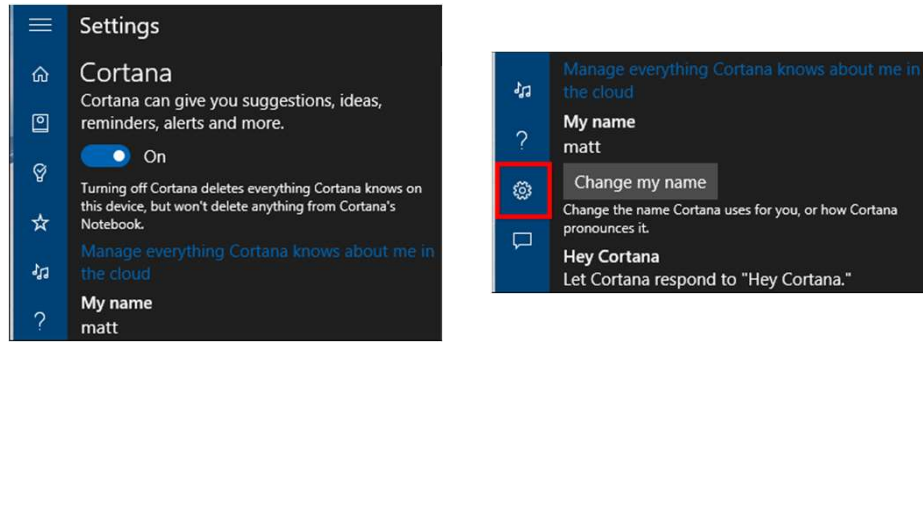


## Cortana personal assistant

---



## Cortana personal assistant



## Enabling safe mode on boot

- Safe Mode needed to recover from bad drivers, virus infestation, etc.
- From elevated command prompt:  
`bcdedit /set {bootmgr} displaybootmenu yes`  
`bcdedit /timeout 2`  
`bcdedit /set {default} bootmenupolicy legacy`

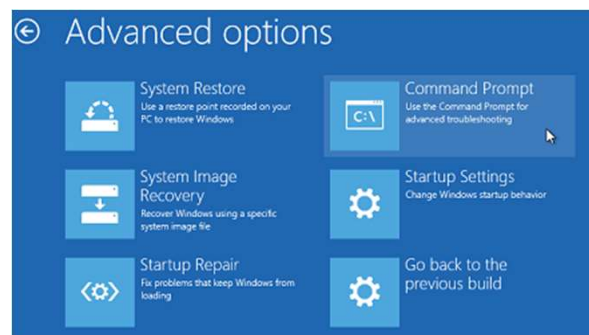
## Enabling safe mode on boot

Hit F8 when you see this screen



## Recovery environment

- Hold down shift key while restarting
- If can't boot, may launch automatically



## Startup Settings

Press a number to choose from the options below:

Use number keys or functions keys F1-F9.

- 1) Enable debugging
- 2) Enable boot logging
- 3) Enable low-resolution video
- 4) Enable Safe Mode
- 5) Enable Safe Mode with Networking
- 6) Enable Safe Mode with Command Prompt
- 7) Disable driver signature enforcement
- 8) Disable early launch anti-malware protection
- 9) Disable automatic restart after failure

Press F10 for more options  
Press Enter to return to your operating system

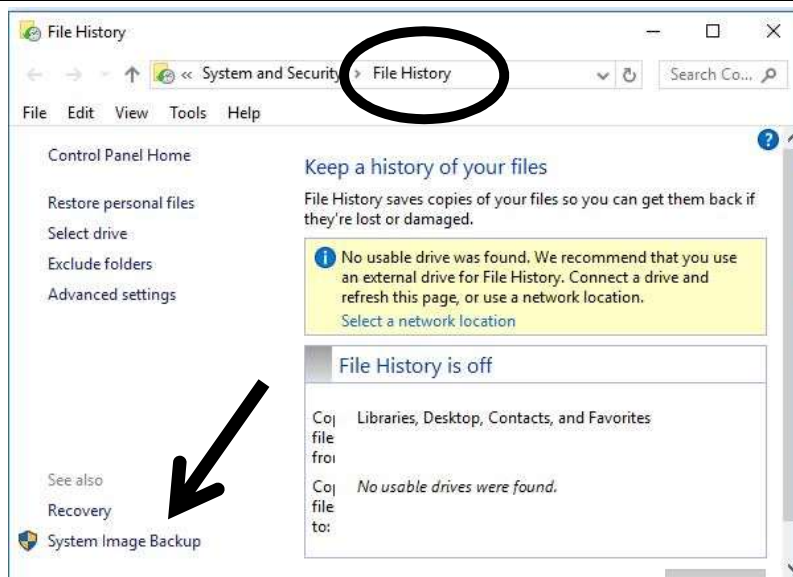


## Back up !!

- Back up data
- Back up your system
- Make a system repair drive



## System image back up





## Data back up

---

- Cloud backup
  - Google Drive
  - DropBox
- Local backup
  - Manual drop-and-drag
  - Third-party software (GFI)
  - Built in software in Windows 10



## The future of Windows 7

---

- Windows 7 security updates end January 2020
- Windows 7 Pro OEM sales end October 31, 2016
- Software vendors will stop support soon



## To learn more

---

My website

[www.suekayton.com](http://www.suekayton.com)

click on Windows 10 update

Tom's Guide to Windows 10

<http://www.laptopmag.com/t/windows>

