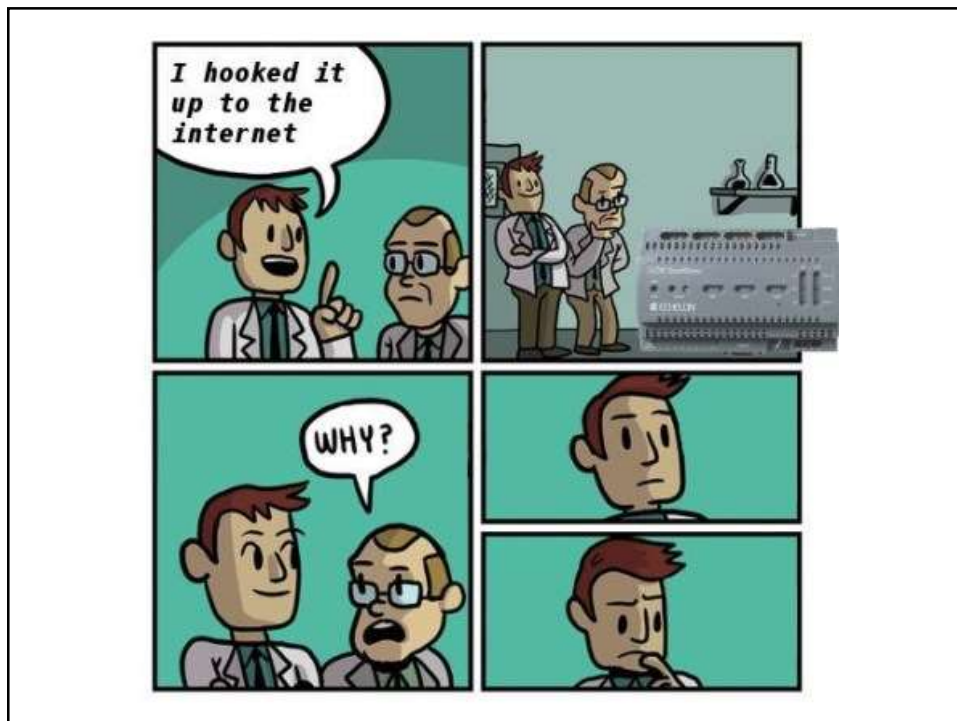
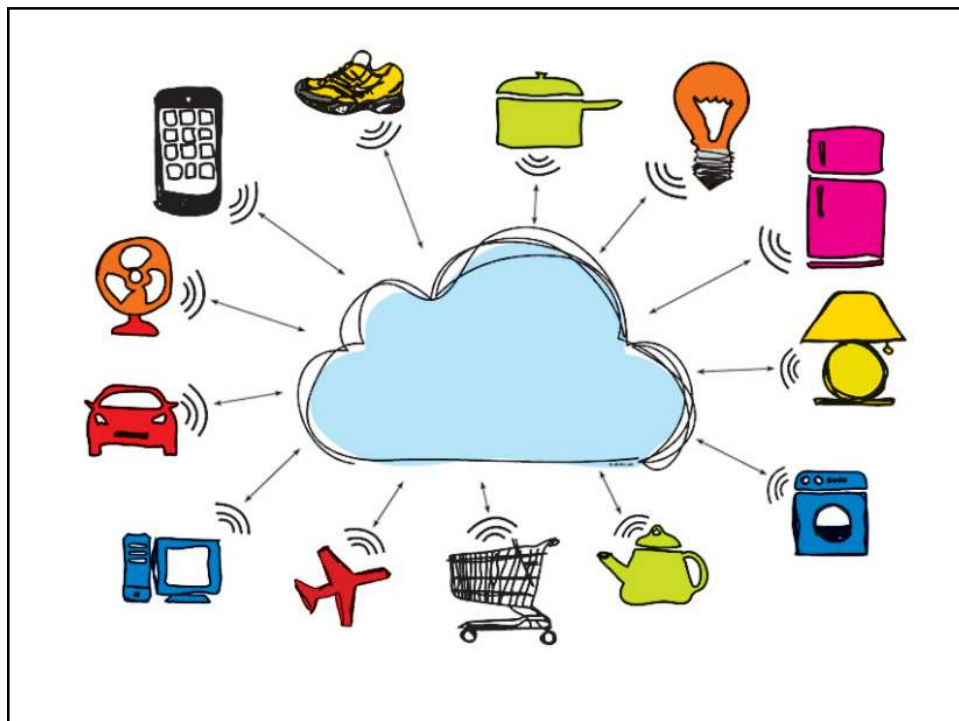
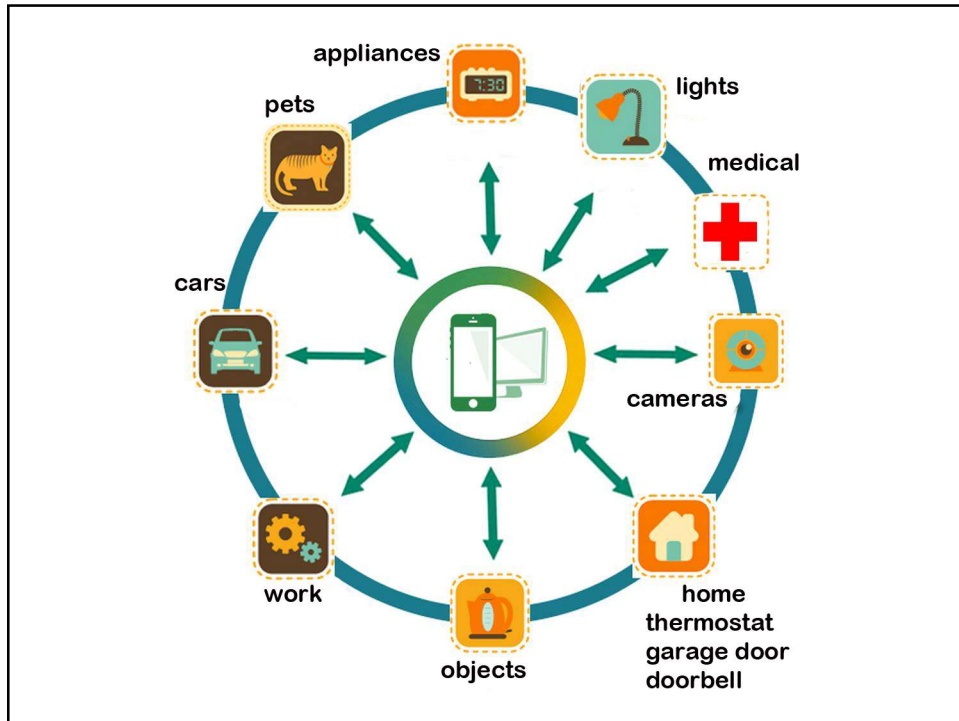
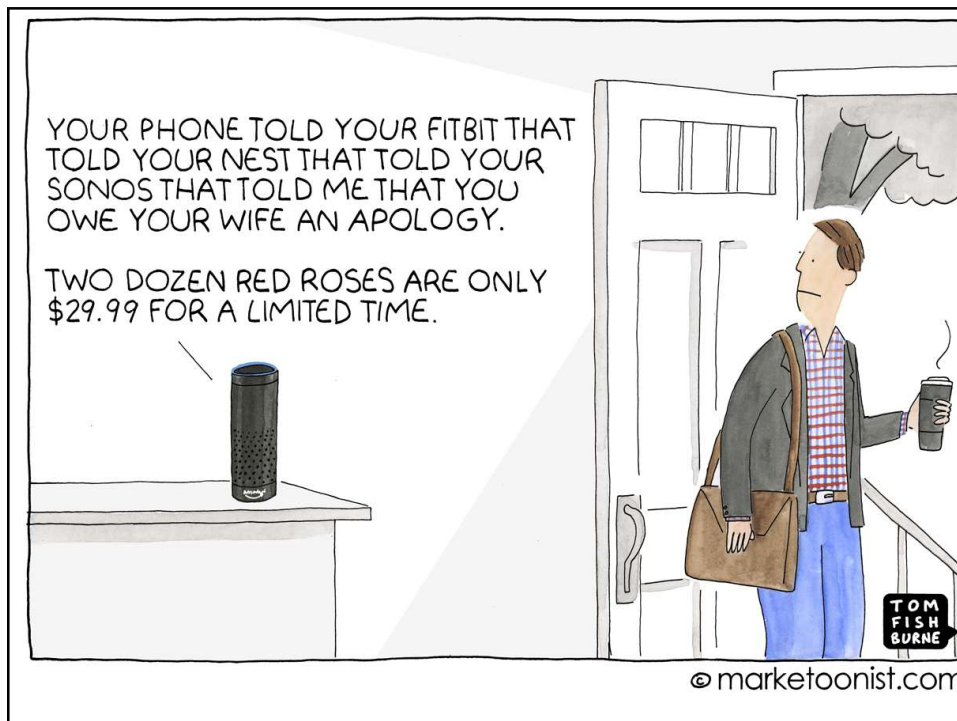
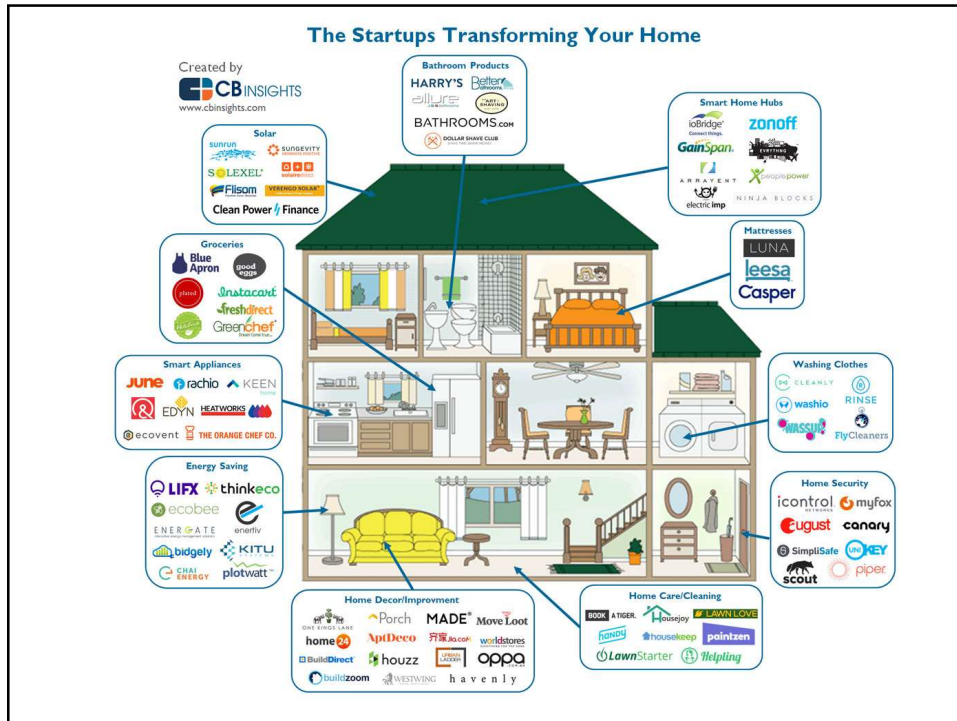


The Internet is Everywhere

May 2018 for Redwood City Computer Club
Sue Kayton
kayton@alum.mit.edu

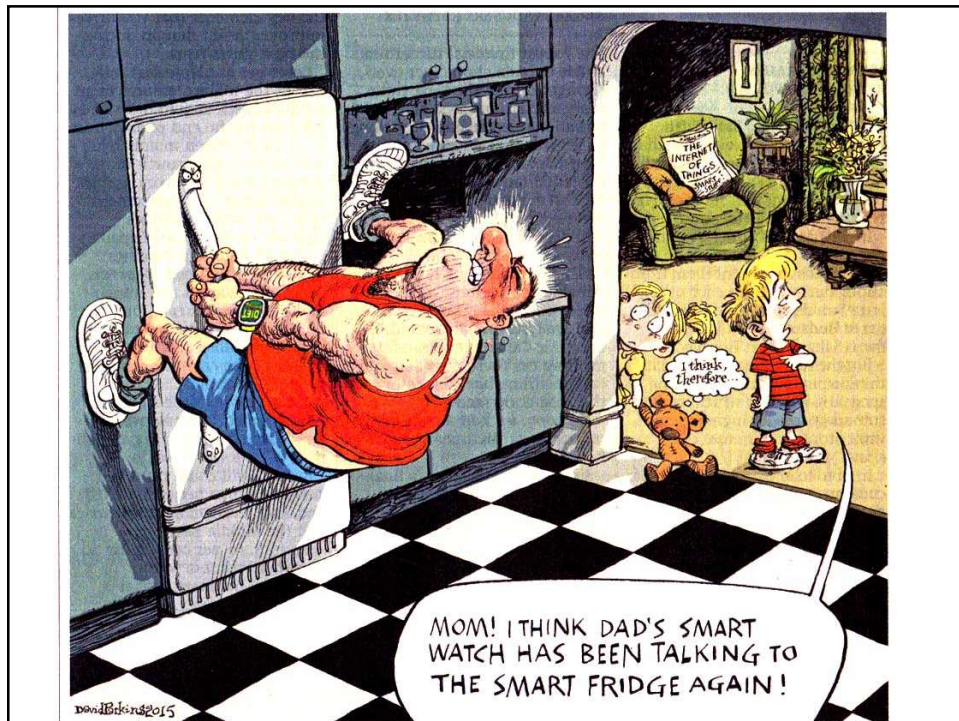






- **Medical – FitBit, blood pressure monitor, panic button, glucose alert, pill alert**
- **Food – grocery list, turn on CrockPot, hands-free payment**
- **Car – notifications for maintenance and gas, hands-off driving, FasTrak, parking**
- **Home – heat, A/C, doorbell, garage door, security system, lights, washer/dryer**
- **Kids, grandkids, and pets – track location**

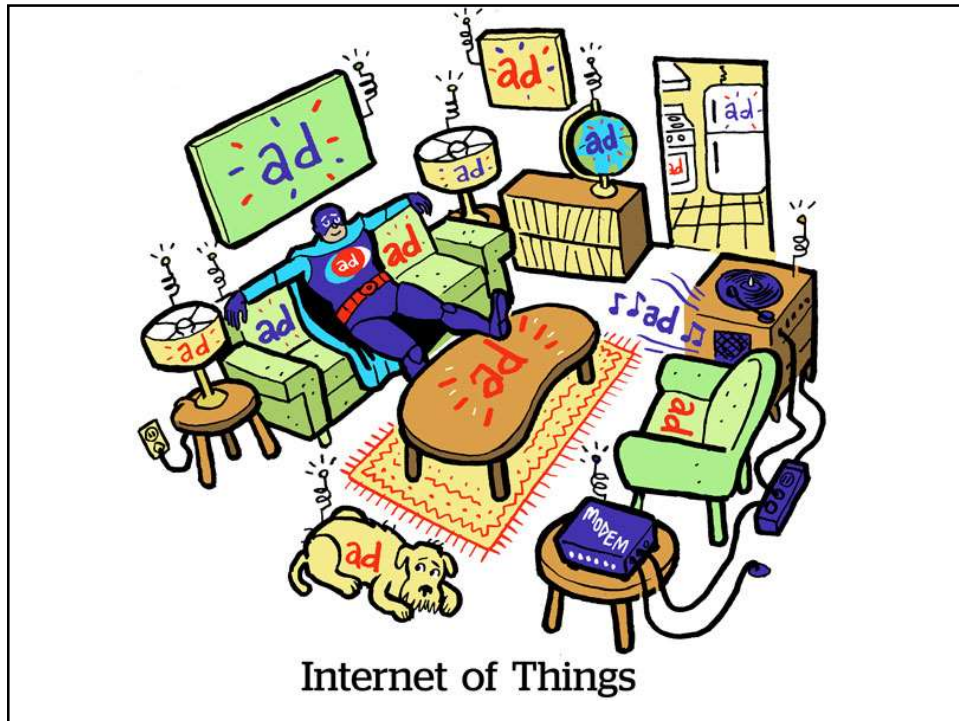


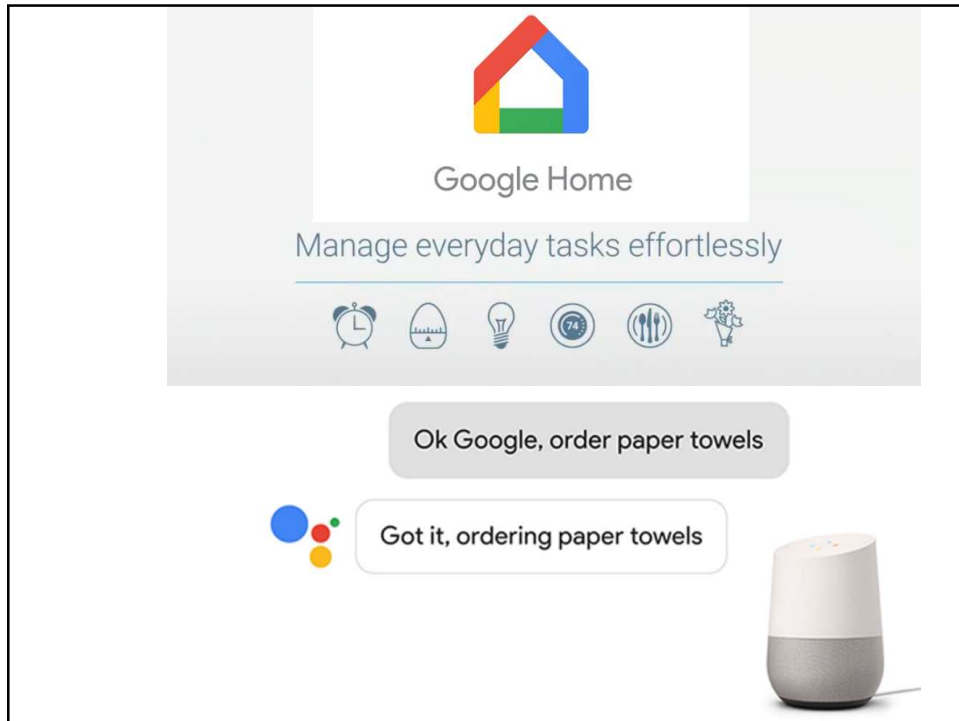


Alexa in action

<https://www.facebook.com/ScreenJunkies/videos/10155953204437403>



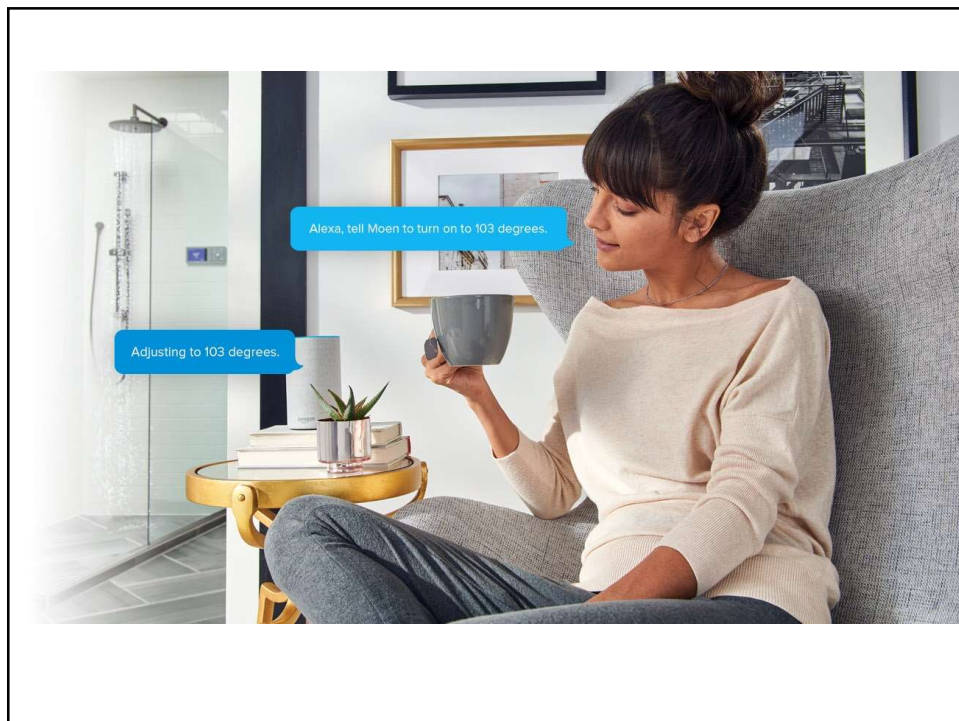




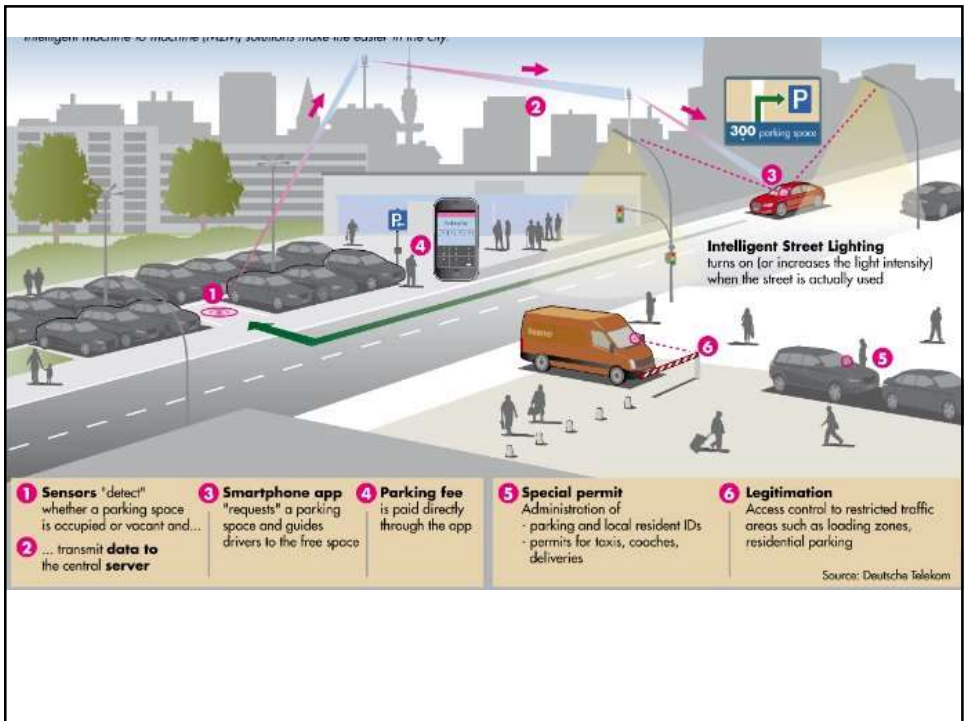
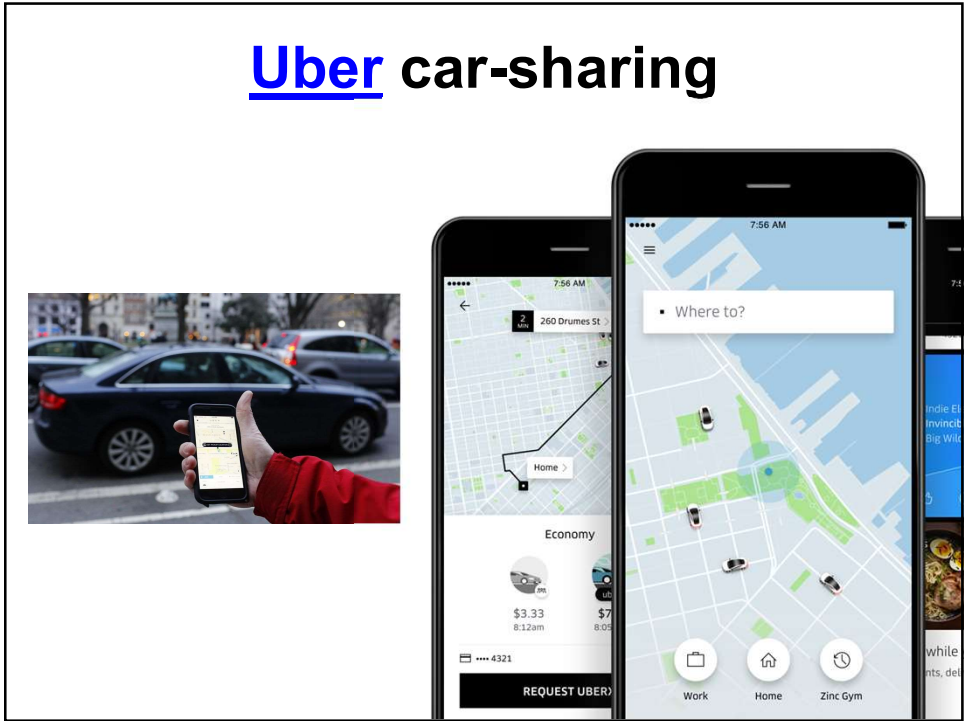
The screenshot displays the Google Home app interface. At the top center is the Google Home logo, a colorful house shape. Below it, the text "Google Home" is centered. Underneath, the phrase "Manage everyday tasks effortlessly" is displayed. A horizontal line separates this text from a row of six icons: an alarm clock, an egg timer, a lightbulb, a weather icon showing 74°F, a fork and knife, and a shopping cart. Below the icons is a grey speech bubble containing the text "Ok Google, order paper towels". To the left of this bubble is the Google Assistant logo (four colored dots). Below the speech bubble is a white speech bubble containing the text "Got it, ordering paper towels". To the right of the white speech bubble is a white and grey smart speaker.

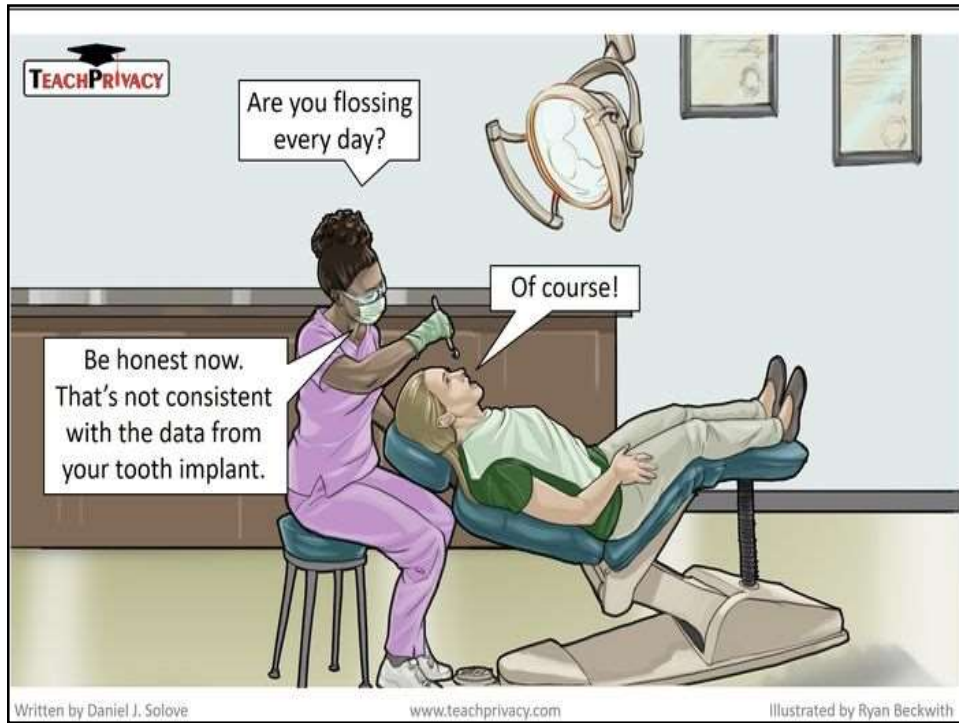


This advertisement features two smart doorbells. On the left is a silver Ring doorbell with a black camera lens at the top and a blue ring-shaped button. To its right, the text "Ring doorbell" is written in blue and black. Below the Ring doorbell, the text "Sky Bell" is written in blue. To the right of the Sky Bell text is a black, circular Sky Bell doorbell with a camera lens and a green light at the bottom.

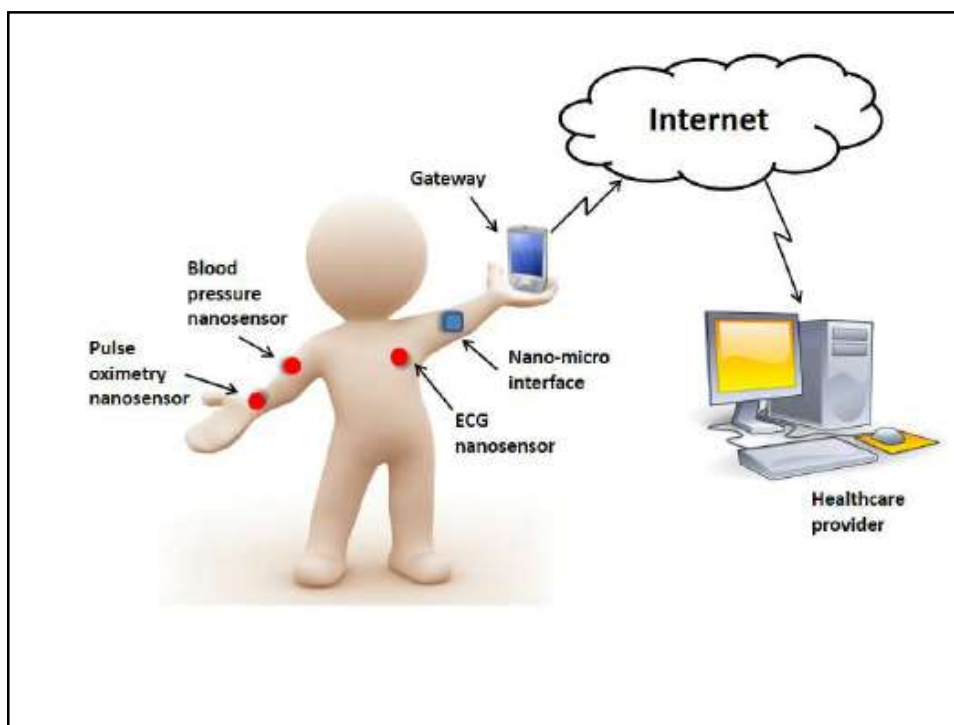


Uber car-sharing













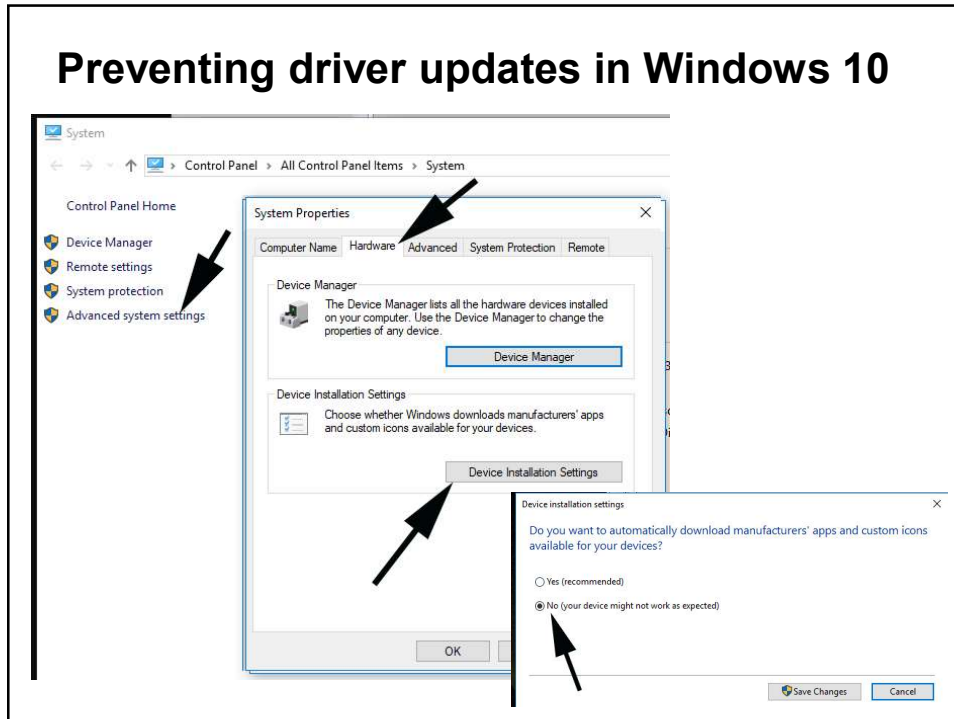
The Internet is Everywhere

Netgear PowerLine WiFi



<https://www.amazon.com/NETGEAR-PowerLINE-Wi-Fi-Outlet-PLPW1000-100NAS/dp/B01N5AT8DC>

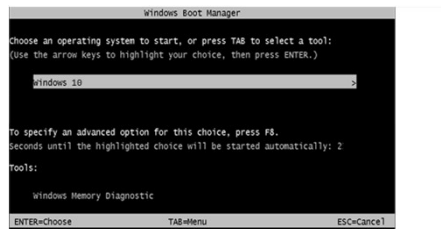
Preventing driver updates in Windows 10



Enabling safe mode on boot in Windows 10

To enable safe mode, open an elevated command prompt and type in the following three lines, one at a time.

```
bcdedit /set {bootmgr} displaybootmenu yes
bcdedit /timeout 3
bcdedit /set {default} bootmenupolicy legacy
```



On boot, the screen above will flash for less than one second. When you see it, immediately press F8 one time and select Safe mode or Safe mode with networking

Package and mail notification

Sign up for email or text alerts when you get packages

- **FedEx** - create an account, then go to [Delivery Manager](#)
- **UPS** - create an account then go to [My Choice](#)
- **US post office** - sign up for [Informed Delivery](#)

Windows April 2018 update (version 1803)

Tested on over 25 computers. Very few problems

- **File and folder sharing – does not save settings – have to set up from scratch**
- **Recycle bin – changes setting to no confirmation dialog**
- **Printer and device detection – issue on first boot**
- **Games (Solitaire, etc.) get uninstalled**

Before installing major Windows update

Housekeeping tasks

- **Back up data**
- **Do a full system backup**
- **Delete temporary files using Disk Cleanup**
 - **Run it twice, second time select Clean Up System Files**
- **Run CHKDSK**